

1 Supplemental

(a)

Program	distance metric	12 Flies 1-to-1	12 Flies neighbors	17 Fungi 1-to-1	7 Yeasts WGD
SPIDIR	HKY	82%	71%	81%	82%
	JTT	88%	82%	93%	93%
PHYML+assist	HKY	36%	8%	0.8%	12%
PHYML	HKY	38%	16%	0.9%	18%
	JTT	21%	13%	0.6%	25%
MrBayes	HKY	34%	10%	0.2%	12%
	JTT	19%	5%	0.8%	24%
PHYLIP ML	HKY	35%	8%	0.2%	17%
	JTT	19%	5%	0.5%	24%
PHYLIP	HKY	23%	14%	0%	10%
Parsimony	JTT	10%	6%	0.1%	11%
BIONJ	HKY	42%	15%	0.4%	12%
	JTT	23%	7%	0.4%	23%
	dS	2%	3%	0%	1%

(b)

Program	1-to-1	1 dup	2 dup	3 dup	2 dup 1 loss	2 dup 2 loss	3 dup 2 loss
SPIDIR(nt)	100%	92%	74%	66%	78%	69%	65%
PHYML(nt)	60%	52%	36%	35%	49%	51%	47%
MrBayes(nt)	60%	45%	33%	28%	47%	49%	43%
DNAML(nt)	56%	45%	33%	29%	46%	52%	42%
DNAPARS(nt)	43%	36%	23%	21%	34%	38%	36%
BIONJ(nt)	60%	47%	35%	30%	46%	41%	42%
# genes (min-max)	12	13-21	14-29	15-31	4-29	5-26	4-30
# gene (mean)	12	14.5	17	19	15	12	13

Figure 1: (a) Accuracy of phylogenetic reconstruction on several real datasets: 5154 alignments of 12 fly 1-to-1 orthologs, 200 alignments of fly ortholog neighbors, 739 alignments of 17 fungal 1-to-1 orthologs, 220 alignments of 7 yeast Whole-Genome-Duplication orthologs and paralogs (b) Accuracy of phylogenetic reconstruction on several simulated fly datasets with various numbers of duplication and losses events.

	Species	abbreviation
Flies	<i>D. melanogaster</i>	dmel
	<i>D. sechellia</i>	dsec
	<i>D. simulans</i>	dsim
	<i>D. yakuba</i>	dyak
	<i>D. erecta</i>	dere
	<i>D. ananassae</i>	dana
	<i>D. pseudoobscura</i>	dpse
	<i>D. persimilis</i>	dper
	<i>D. willistoni</i>	dwil
	<i>D. mojavensis</i>	dmoj
	<i>D. virilis</i>	dvir
	<i>D. grimshawi</i>	dgri
Fungi	<i>S. cerevisiae</i>	scer
	<i>S. paradoxus</i>	spar
	<i>S. mikatae</i>	smik
	<i>S. bayanus</i>	sbay
	<i>S. castellii</i>	scas
	<i>C. glabrata</i>	cgla
	<i>K. lactis</i>	klac
	<i>A. gossypii</i>	agos
	<i>K. waltii</i>	kwal
	<i>C. albicans</i>	calb
	<i>C. dublinensis</i>	cdub
	<i>C. tropicalis</i>	ctro
	<i>C. parapsilosis</i>	cpar
	<i>L. elongisporus</i>	lelo
	<i>C. lusitaniae</i>	clus
<i>C. guilliermondii</i>	cgui	
<i>D. hansenii</i>	dhan	

Figure 2: Species analyzed in evolutionary model training and testing.

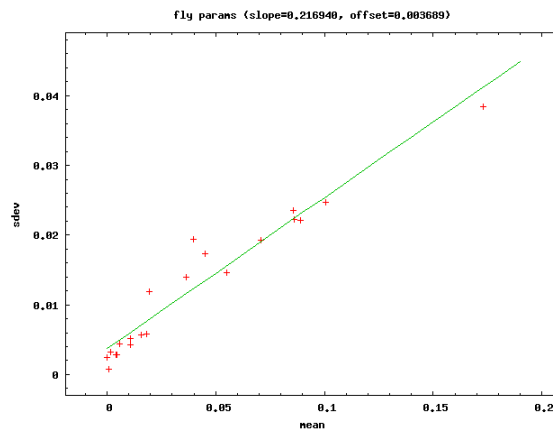
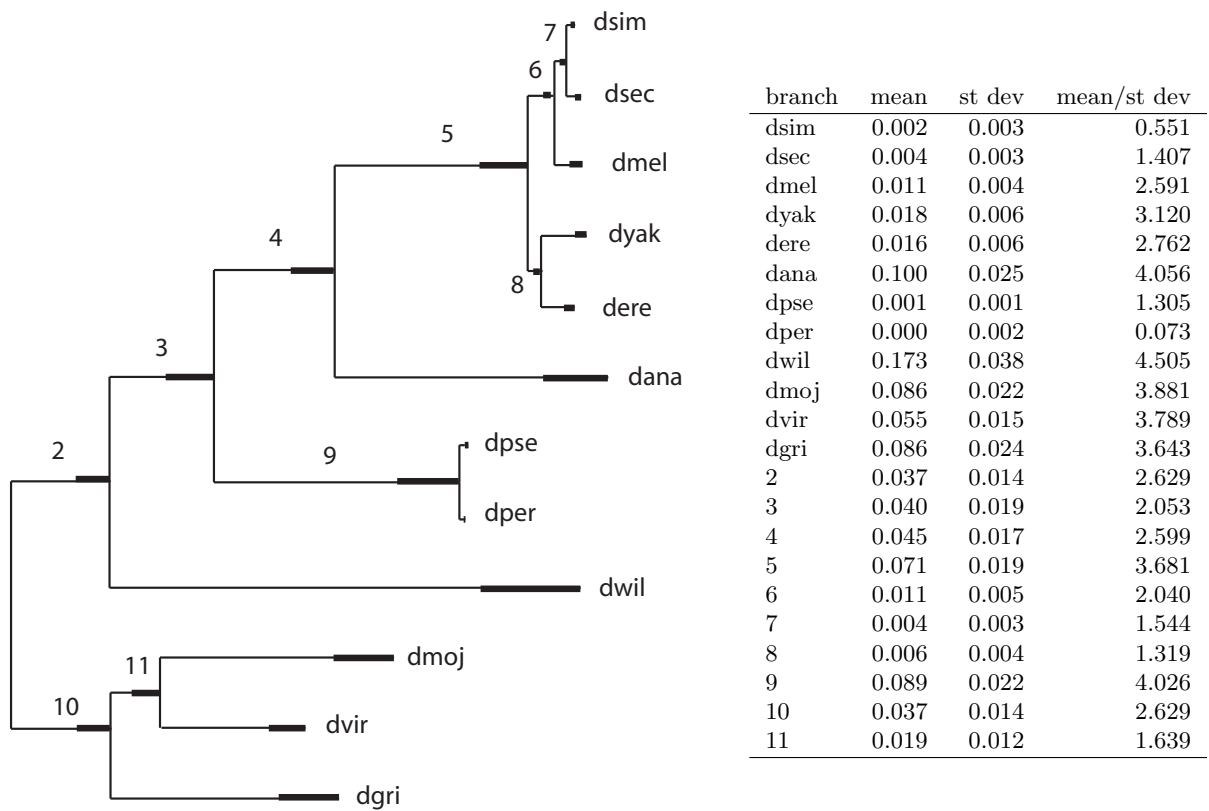


Figure 3: Species-specific rates for the 12 fly tree. Branches lengths are drawn with the mean species-specific rate. Thick line segments represent one standard deviation of the species-specific rate. Standard deviation is consistently 1/4 of the mean.

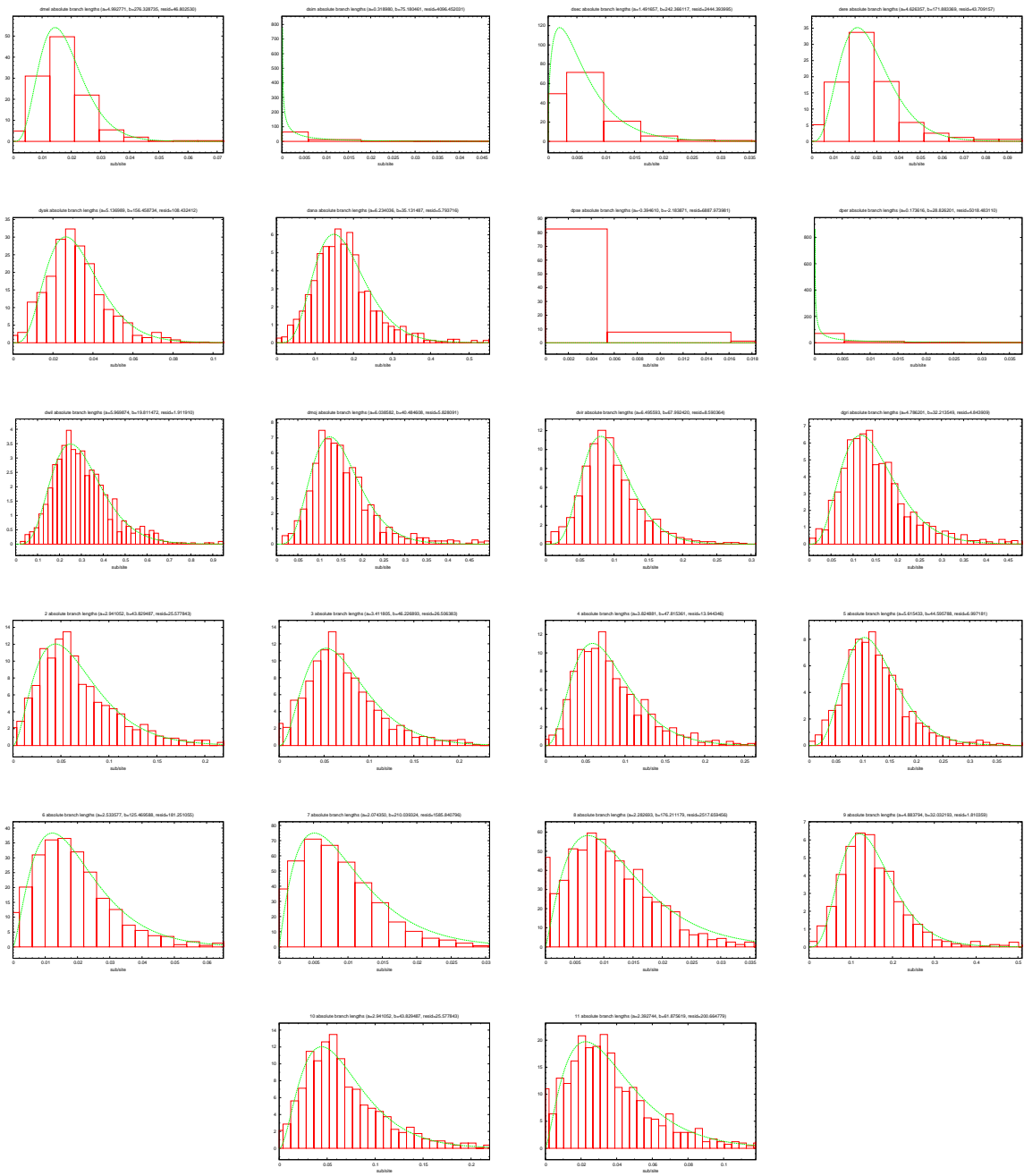


Figure 4: Branch length distributions fitted by gamma for every branch in the fly tree.

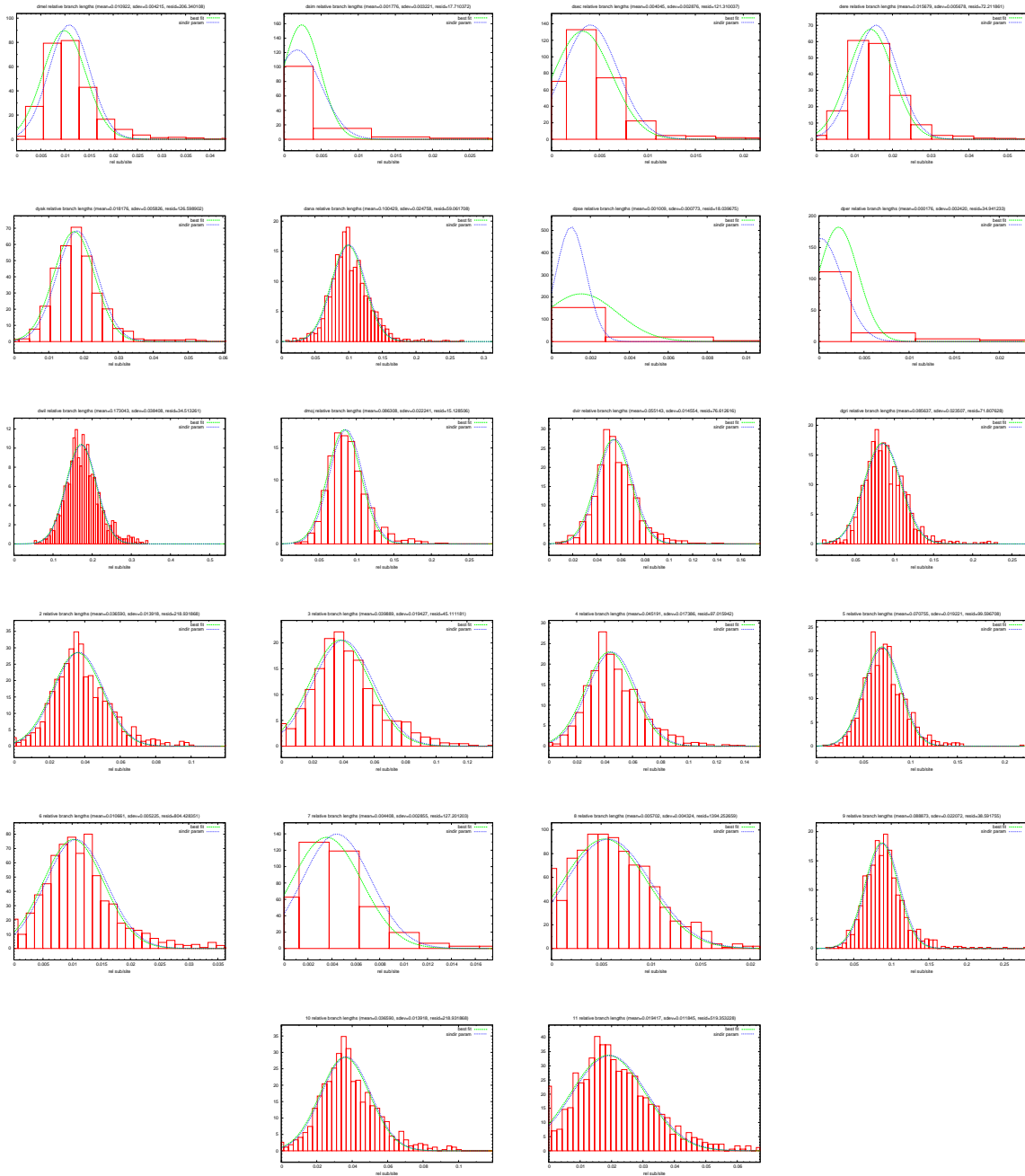


Figure 5: Normalized length distributions fitted by normal for every branch in the fly tree. 'Best fit' indicates fitting lengths by least squared error. 'spidit fit' indicates MLE estimation of parameters.

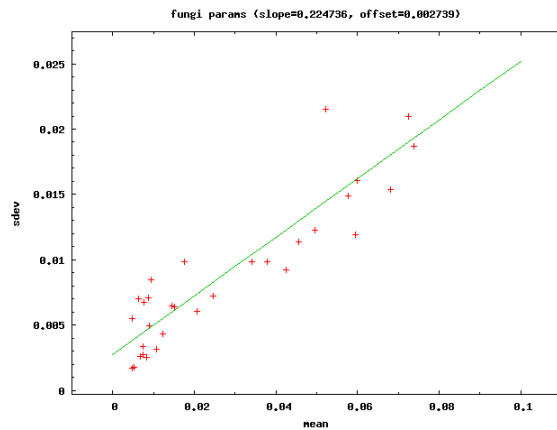
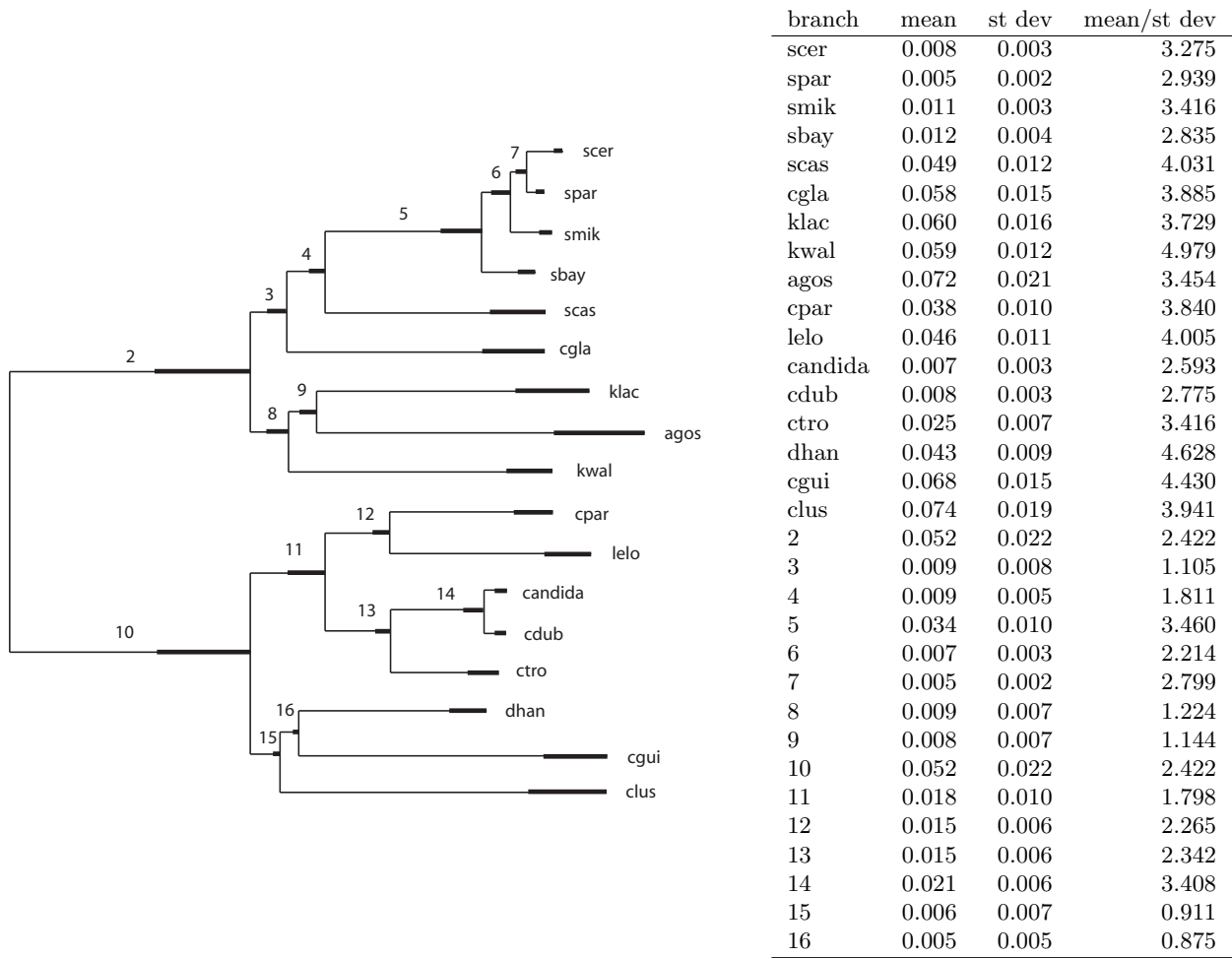


Figure 6: Species-specific rates for the 17 fungal tree. Branches lengths are drawn with the mean species-specific rate. Thick line segments represent one standard deviation of the species-specific rate. Standard deviation is consistently 1/4 of the mean.

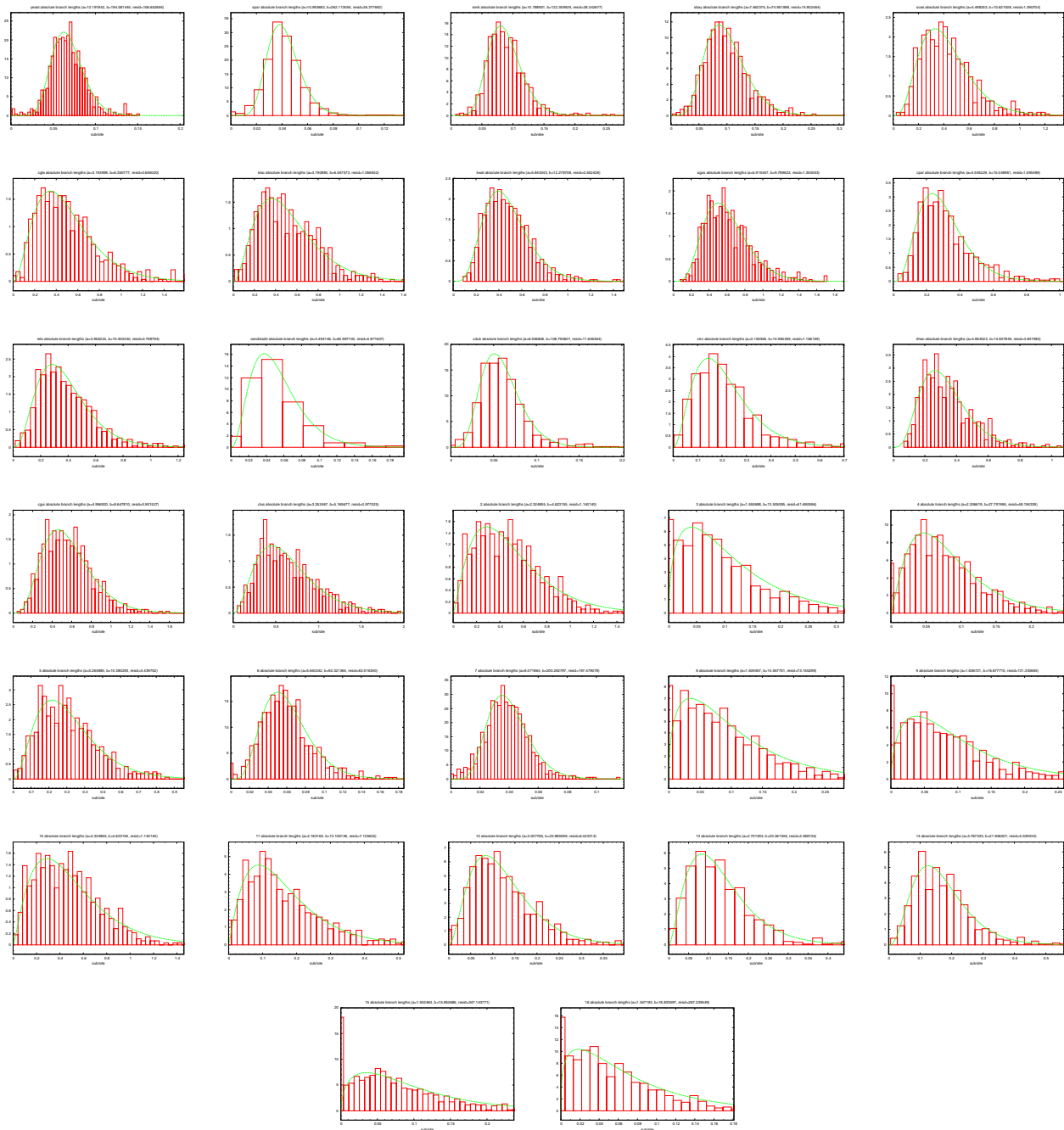


Figure 7: Branch length distributions fitted by gamma for every branch in the fly tree.

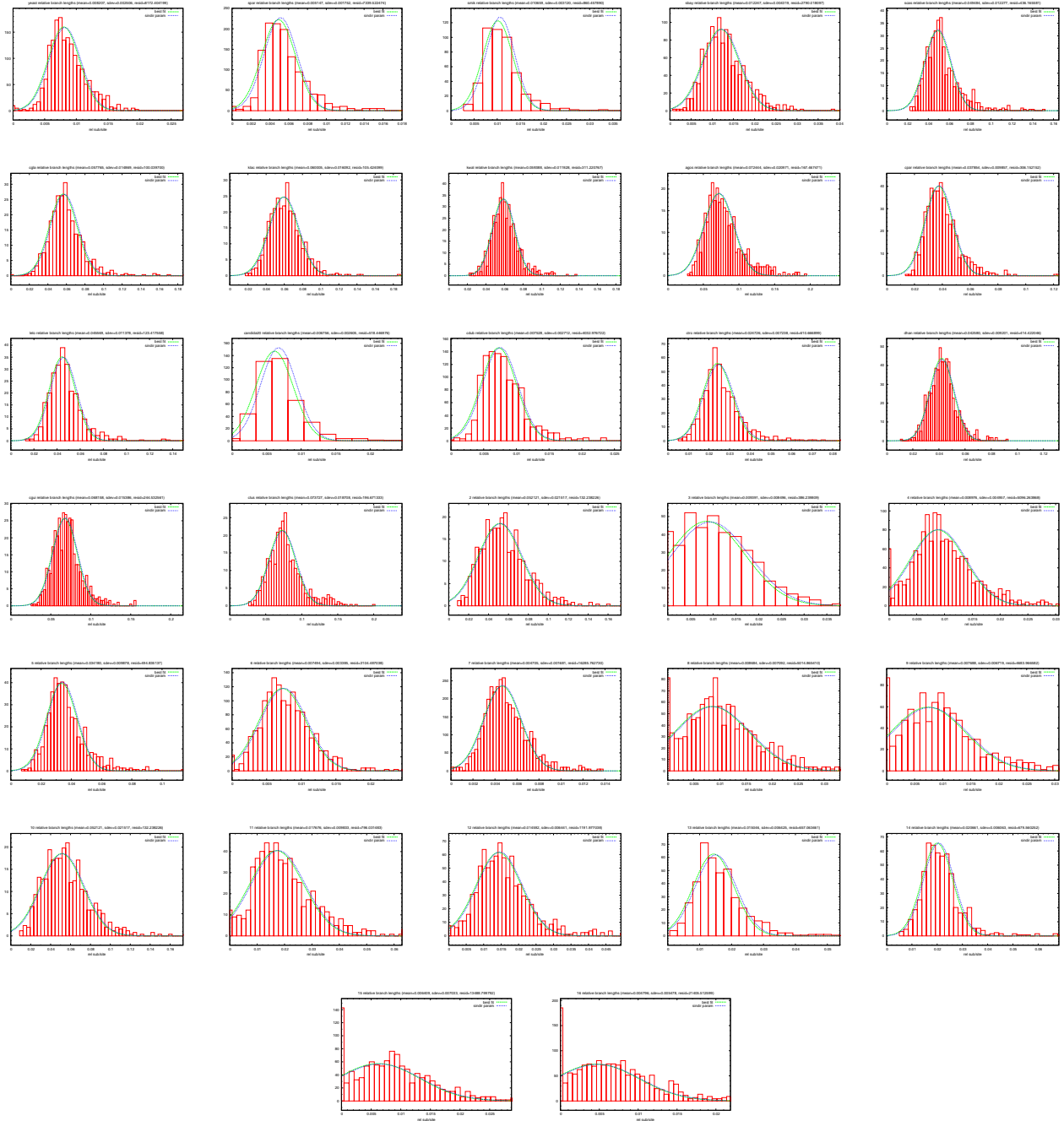


Figure 8: Normalized branch length distributions fitted by normal for every branch in the fly tree. 'Best fit' indicates fitting by least squared error. 'spidir fit' indicates MLE estimation of parameters.

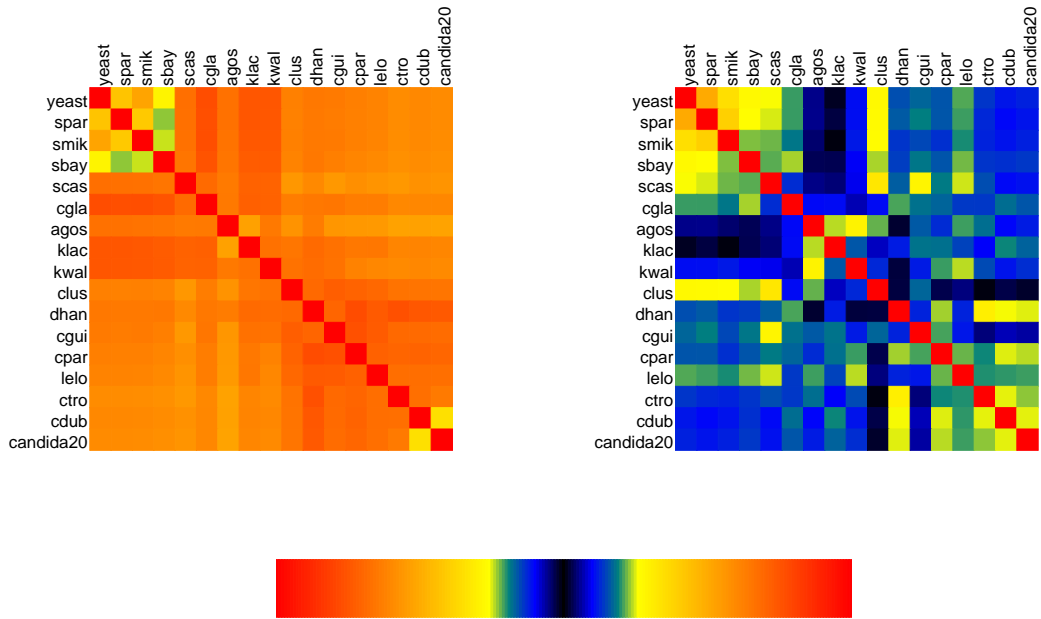


Figure 9: Branch length correlations (Pearsons) within the fungal tree. Absolute branch lengths (left) are more correlated than normalized branch lengths (right). Color scale goes from -1 (red) to 0 (black) to 1 (red).