

# 1 Supplementary Figures

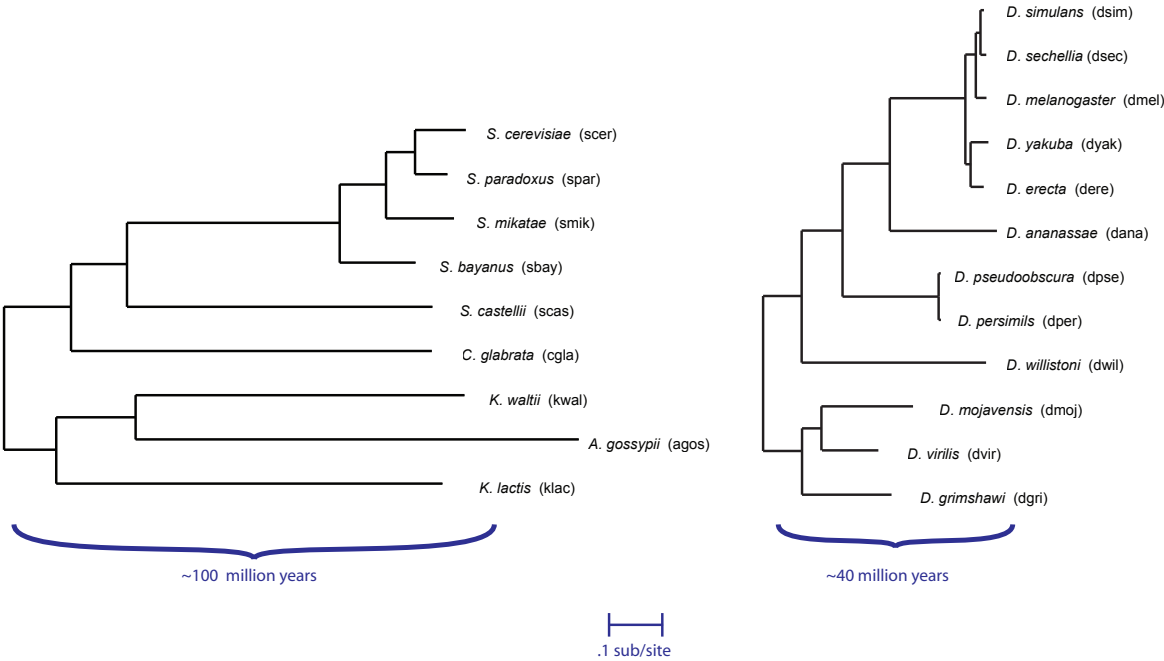


Figure S1: Species names, abbreviations, and phylogeny

Name	Topology
T1	((((((dere,dyak),dmel),dana),dpse),dwil),((dmoj,dvir),dgri))
T2	((((((dere,dmel),dyak),dana),dpse),dwil),((dmoj,dvir),dgri))
T3	((((((dere,dyak),dmel),dana),dpse),dwil),((dgri,dvir),dmoj))
T4	((((((dmel,dyak),dere),dana),dpse),dwil),((dmoj,dvir),dgri))
T5	((((((dere,dmel),dyak),dana),dpse),dwil),((dgri,dvir),dmoj))
T6	((((((dere,dyak),dmel),dana),dpse),dwil),((dgri,dmoj),dvir))
T7	((((((dmel,dyak),dere),dana),dpse),dwil),((dgri,dvir),dmoj))
T8	((((((dere,dyak),dmel),dana),dwil),dpse),((dmoj,dvir),dgri))
T9	((((((dere,dyak),dmel),dana),dpse),dwil),((dmoj,dvir),dgri))
T10	((((((dere,dmel),dyak),dana),dpse),dwil),((dgri,dmoj),dvir))
T11	((((((dere,dyak),dmel),dana),dpse),dwil),((dgri,dvir),dmoj))
T12	((((((dere,dmel),dyak),dana),dwil),dpse),((dmoj,dvir),dgri))
T13	((((((dmel,dyak),dere),dana),dpse),dwil),((dgri,dmoj),dvir))
T14	((((((dere,dyak),dmel),dana),dwil),dpse),((dgri,dvir),dmoj))
T15	((((((dere,dmel),dyak),dana),dpse),dwil),((dmoj,dvir),dgri))

Figure S2a: **Naming scheme for ortholog gene-trees for 9 fly species.** Ordered by ML frequency.

SPIDIR	SPIDIR (D=.5)	SPIDIR (D=.1)	PHYML	BIONJ	MrBayes	DNAPARS
T1 (61.7%)	T1 (74.0%)	T1 (85.6%)	T1 (40.7%)	T1 (47.4%)	T1 (40.1%)	T1 (34.9%)
T3 (13.5%)	T3 (9.3%)	T3 (4.6%)	T2 (12.0%)	T3 (15.9%)	T2 (11.8%)	T3 (10.1%)
T2 (3.6%)	T2 (2.9%)	T2 (1.7%)	T3 (11.1%)	T2 (7.7%)	T3 (11.3%)	T2 (7.2%)
T8 (3.4%)	T8 (2.6%)	T8 (1.6%)	T4 (6.9%)	T4 (4.0%)	T4 (6.4%)	T4 (5.9%)
T4 (2.7%)	T4 (2.3%)	T4 (1.5%)	T5 (4.7%)	T5 (3.4%)	T5 (4.7%)	T6 (2.9%)
T6 (2.5%)	T6 (1.7%)	T6 (1.0%)	T6 (3.3%)	T8 (2.3%)	T6 (2.9%)	T5 (2.8%)
T9 (1.5%)	T16 (1.3%)	T16 (0.7%)	T7 (2.8%)	T7 (2.1%)	T7 (2.9%)	T7 (2.4%)
T16 (1.5%)	T9 (0.9%)	T9 (0.6%)	T8 (2.0%)	T6 (2.0%)	T9 (2.0%)	T8 (2.4%)
T5 (1.0%)	T17 (0.4%)	T0 (0.3%)	T9 (2.0%)	T9 (1.8%)	T8 (1.7%)	T9 (2.0%)
T7 (0.9%)	T5 (0.4%)	T17 (0.2%)	T10 (1.3%)	T17 (1.1%)	T10 (0.9%)	T16 (1.2%)

Figure S2b: **Most frequently constructed ortholog gene-trees for 9 fly species.** Different methods reconstruct the same topologies at similar frequencies.

Name	Topology
T1	(((((dsec,dsim),dmel),(dere,dyak)),dana),(dper,dpse),dwil),((dmoj,dvir),dgri))
T2	(((((dsec,dsim),dmel),dere),dyak),dana),(dper,dpse),dwil),((dmoj,dvir),dgri))
T3	(((((dsec,dsim),dmel),(dere,dyak)),dana),(dper,dpse),dwil),((dgri,dvir),dmoj))
T4	(((((dsec,dsim),dmel),dyak),dere),dana),(dper,dpse),dwil),((dmoj,dvir),dgri))
T5	(((((dsec,dsim),dmel),dere),dyak),dana),(dper,dpse),dwil),((dgri,dvir),dmoj))
T6	(((((dsec,dsim),dmel),(dere,dyak)),dana),(dper,dpse),dwil),((dgri,dmoj),dvir))
T7	(((((dsec,dsim),dmel),dyak),dere),dana),(dper,dpse),dwil),((dgri,dvir),dmoj))
T8	(((((dsec,dsim),dmel),(dere,dyak)),dana),dwil),(dper,dpse),((dmoj,dvir),dgri))
T9	(((((dsec,dsim),dmel),(dere,dyak)),dana),(dper,dpse),dwil),((dmoj,dvir),dgri))
T10	(((((dsec,dsim),dmel),dere),dyak),dana),(dper,dpse),dwil),((dgri,dmoj),dvir))
T11	(((((dmoj,dvir),dgri),dsec),(dere,dyak)),dana),(dper,dpse),dwil),((dmoj,dvir),dgri))
T12	(((((dmoj,dvir),dgri),dsec),(dere,dyak)),dana),(dper,dpse),dwil),((dmoj,dvir),dgri))
T13	(((((dmoj,dvir),dgri),dsec),(dere,dyak)),dana),(dper,dpse),dwil),((dmoj,dvir),dgri))
T14	(((((dmoj,dvir),dgri),dsec),(dere,dyak)),dana),(dper,dpse),dwil),((dmoj,dvir),dgri))
T15	(((((dmoj,dvir),dgri),dsec),(dere,dyak)),dana),(dper,dpse),dwil),((dmoj,dvir),dgri))

Figure S3a: **Naming scheme for ortholog gene-trees for 12 fly species.** Ordered by ML frequency.

	SPIDIR	PHYML	BIONJ	MrBayes	DNAPARS
T1	T1 (46.6%)	T1 (37.9%)	T1 (41.9%)	T1 (34.3%)	T1 (23.5%)
T3	T3 (7.7%)	T2 (11.0%)	T3 (14.6%)	T2 (12.0%)	T2 (9.1%)
T13	T13 (4.5%)	T3 (10.0%)	T2 (6.8%)	T3 (8.9%)	T3 (6.4%)
T11	T11 (3.7%)	T4 (5.8%)	T4 (3.8%)	T4 (6.7%)	T4 (6.3%)
T8	T8 (2.7%)	T5 (4.2%)	T5 (3.2%)	T5 (4.9%)	T5 (2.9%)
T2	T2 (2.3%)	T6 (2.7%)	T8 (2.4%)	T7 (2.9%)	T7 (2.5%)
T6	T6 (1.7%)	T7 (2.4%)	T6 (1.9%)	T6 (2.1%)	T6 (2.0%)
T4	T4 (1.3%)	T8 (1.7%)	T7 (1.8%)	T9 (1.8%)	T8 (1.6%)
T9	T9 (1.2%)	T9 (1.5%)	T9 (1.7%)	T8 (1.3%)	T9 (1.3%)
T21	T21 (1.1%)	T10 (1.0%)	T21 (1.0%)	T10 (1.0%)	T12 (1.2%)

Figure S3b: **Most frequently constructed ortholog gene-trees for 12 fly species.** Different methods reconstruct the same topologies at similar frequencies.

	SPIDIR	PHYML	BIONJ	MrBayes	DNAPARS
T1	T1 (84.8%)	T1 (74.2%)	T1 (70.8%)	T1 (66.2%)	T1 (53.6%)
T3	T3 (3.0%)	T2 (4.8%)	T3 (6.6%)	T2 (7.8%)	T2 (11.4%)
T8	T8 (2.6%)	T4 (4.2%)	T2 (5.6%)	T4 (4.4%)	T4 (8.0%)
T11	T11 (2.2%)	T6 (3.2%)	T4 (4.4%)	T3 (3.8%)	T3 (5.4%)
T9	T9 (1.4%)	T3 (3.0%)	T11 (1.8%)	T6 (3.0%)	T6 (3.2%)
T13	T13 (1.4%)	T13 (1.8%)	T6 (1.8%)	T12 (1.8%)	T0 (2.4%)
T6	T6 (1.0%)	T11 (1.6%)	T8 (1.6%)	T13 (1.8%)	T13 (2.4%)
T4	T4 (0.8%)	T9 (1.4%)	T9 (1.4%)	T11 (1.8%)	T12 (2.2%)
T2	T2 (0.8%)	T8 (1.0%)	T13 (1.2%)	T9 (1.4%)	T8 (1.6%)
T21	T21 (0.6%)	T21 (0.6%)	T21 (0.6%)	T8 (1.4%)	T9 (1.2%)

Figure S3c: **Most frequent gene-trees for 500 simulated fly orthologs (12 species).** Simulated trees have similar errors at nearly the same relative frequencies as those found in real fly gene-trees.

PHYML	MrBayes	BIONJ	Occurrence
<b>T1</b>	<b>T1</b>	<b>T1</b>	<b>1211 (23.5%)</b>
<b>T3</b>	<b>T3</b>	<b>T3</b>	<b>239 (4.6%)</b>
<b>T2</b>	<b>T2</b>	<b>T2</b>	<b>195 (3.8%)</b>
T2	T2	T1	136 (2.6%)
T1	T1	T3	128 (2.5%)
<b>T4</b>	<b>T4</b>	<b>T4</b>	<b>90 (1.7%)</b>
T1	T2	T1	87 (1.7%)
<b>T5</b>	<b>T5</b>	<b>T5</b>	<b>69 (1.3%)</b>
T4	T4	T1	60 (1.2%)
T1	T4	T1	53 (1.0%)
T3	T3	T1	47 (0.9%)
<b>T7</b>	<b>T7</b>	<b>T7</b>	<b>42 (0.8%)</b>
T3	T1	T1	36 (0.7%)
T3	T1	T3	34 (0.7%)
T1	T3	T1	34 (0.7%)
T5	T5	T3	30 (0.6%)
<b>T9</b>	<b>T9</b>	<b>T9</b>	<b>26 (0.5%)</b>
T1	T3	T3	26 (0.5%)
<b>T8</b>	<b>T8</b>	<b>T8</b>	<b>24 (0.5%)</b>
T1	T1	T8	22 (0.4%)

Figure S3d: **Most frequently constructed ortholog gene-trees for 12 fly species.** When methods are required to agree, reconstruction frequency for each topology decreases.

Name	Topology
T1	((((spar,yeast),smik),sbay),scas),cgla),((agos,kwal),klac))
T2	((((spar,yeast),smik),sbay),scas),cgla),((agos,klac),kwal))
T3	(((spar,yeast),smik),sbay),(cgla,scas)),((agos,kwal),klac))
T4	(((spar,yeast),smik),sbay),cgla),scas),((agos,kwal),klac))
T6	(((spar,yeast),smik),sbay),(cgla,scas)),((agos,klac),kwal))
T7	(((spar,yeast),smik),sbay),cgla),scas),((agos,klac),kwal))
T5	(((spar,yeast),smik),sbay),scas),klac),((agos,kwal),cgla))
T8	(((spar,yeast),smik),sbay),scas),cgla),((klac,kwal),agos))
T10	(((spar,yeast),smik),sbay),scas),klac),kwal),((agos,cgla))
T14	(((spar,yeast),smik),sbay),scas),((agos,kwal)),(cgla,klac))
T12	(((spar,yeast),smik),sbay),(cgla,scas)),((klac,kwal),agos))
T16	(((spar,yeast),sbay),smik),scas),cgla),((agos,klac),kwal))
T15	(((smik,yeast),spar),sbay),scas),cgla),((agos,kwal),klac))
T18	(((spar,yeast),sbay),smik),cgla),scas),((agos,kwal),klac))
T24	(((spar,yeast),smik),sbay),scas),((agos,klac)),(cgla,kwal))
T11	(((spar,yeast),smik),sbay),(klac,scas)),((agos,kwal),cgla))
T19	(((spar,yeast),smik),sbay),scas),((klac,kwal)),(agos,cgla))
T20	(((spar,yeast),smik),sbay),((agos,kwal)),((klac,scas),cgla))
T31	(((spar,yeast),smik),sbay),klac),((agos,kwal),((cgla,scas))))
T28	(((spar,yeast),smik),sbay),((agos,kwal)),((cgla,klac),scas))

Figure S4a: Naming scheme for ortholog gene-trees for 9 fungi species. Ordered by ML frequency.

SPIDIR	SPIDIR (D=.5)	SPIDIR (D=.1)	PHYML	BIONJ	MrBayes	DNAPARS
T1 (43.2%)	T1 (61.8%)	T1 (77.8%)	T1 (23.5%)	T1 (29.6%)	T1 (31.4%)	T1 (22.2%)
T2 (13.0%)	T2 (8.5%)	T2 (5.4%)	T2 (16.6%)	T2 (13.3%)	T2 (10.8%)	T2 (10.6%)
T3 (8.0%)	T4 (6.8%)	T4 (4.5%)	T3 (10.0%)	T3 (8.9%)	T3 (9.7%)	T4 (7.8%)
T4 (7.6%)	T3 (5.8%)	T3 (2.4%)	T4 (8.8%)	T4 (6.2%)	T4 (9.1%)	T3 (7.8%)
T8 (4.9%)	T8 (2.4%)	T9 (1.9%)	T6 (6.4%)	T5 (6.0%)	T5 (5.4%)	T5 (3.9%)
T6 (2.8%)	T5 (1.5%)	T8 (1.4%)	T7 (4.7%)	T6 (3.8%)	T6 (3.1%)	T7 (3.8%)
T7 (2.6%)	T9 (1.4%)	T5 (1.4%)	T5 (3.0%)	T7 (2.7%)	T7 (2.8%)	T6 (2.7%)
T13 (1.8%)	T7 (1.2%)	T10 (0.4%)	T8 (2.6%)	T8 (2.6%)	T11 (2.0%)	T9 (2.0%)
T5 (1.5%)	T6 (1.1%)	T47 (0.3%)	T10 (1.1%)	T14 (1.6%)	T10 (1.8%)	T8 (1.8%)
T12 (1.5%)	T17 (0.7%)	T50 (0.3%)	T14 (1.1%)	T10 (1.6%)	T15 (0.9%)	T11 (1.6%)
T17 (1.4%)	T12 (0.7%)	T16 (0.3%)	T12 (1.1%)	T11 (1.5%)	T8 (0.9%)	T10 (1.6%)
T9 (1.2%)	T10 (0.4%)	T35 (0.3%)	T16 (0.9%)	T22 (1.2%)	T14 (0.8%)	T13 (1.2%)
T16 (0.7%)	T16 (0.4%)	T79 (0.3%)	T15 (0.9%)	T9 (1.1%)	T22 (0.8%)	T20 (0.8%)
T15 (0.7%)	T13 (0.4%)	T55 (0.3%)	T18 (0.9%)	T20 (0.9%)	T20 (0.7%)	T12 (0.8%)
T23 (0.5%)	T23 (0.4%)	T33 (0.3%)	T24 (0.9%)	T21 (0.9%)	T41 (0.7%)	T16 (0.7%)
T29 (0.5%)	T15 (0.4%)	T19 (0.3%)	T11 (0.8%)	T19 (0.8%)	T40 (0.7%)	T27 (0.7%)
T26 (0.5%)	T47 (0.3%)	T36 (0.3%)	T19 (0.7%)	T23 (0.7%)	T18 (0.7%)	T21 (0.7%)
T38 (0.5%)	T53 (0.3%)	T31 (0.1%)	T20 (0.5%)	T18 (0.7%)	T45 (0.7%)	T15 (0.5%)
T35 (0.4%)	T42 (0.3%)	T17 (0.1%)	T31 (0.5%)	T24 (0.7%)	T9 (0.7%)	T25 (0.5%)
T10 (0.4%)	T29 (0.3%)	T122 (0.1%)	T28 (0.5%)	T17 (0.5%)	T24 (0.5%)	T39 (0.5%)

Figure S4b: Most frequently constructed gene-tree topologies on 739 syntenic fungi orthologs. Topologies are numbered by their frequency across all methods.

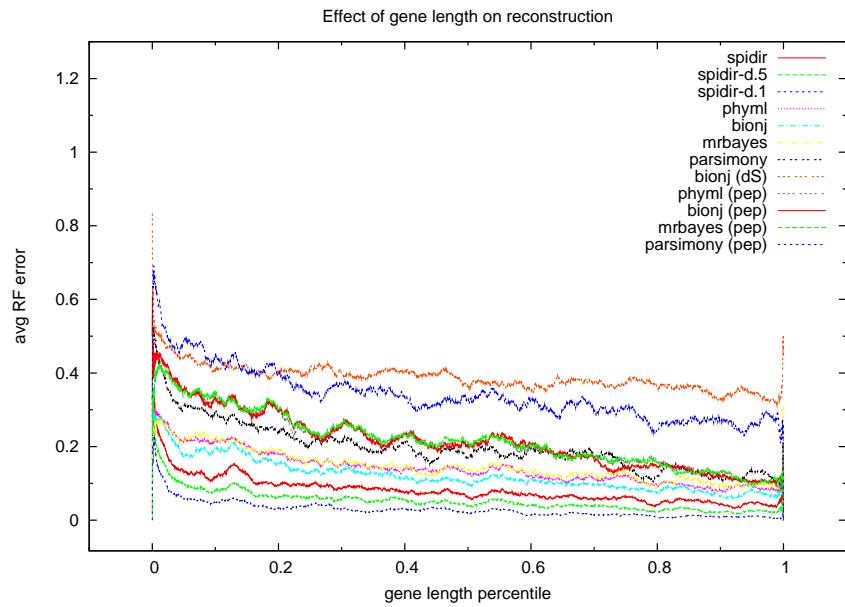


Figure S5: **Robinson Foulds (RF) error correlates with sequence length for the 9 fly species.** Accuracy improvements made by SPIDIR are also apparent for partial tree correctness (RF error). RF error is calculated as the fraction of internal branches that incorrectly bi-partition the leaves.

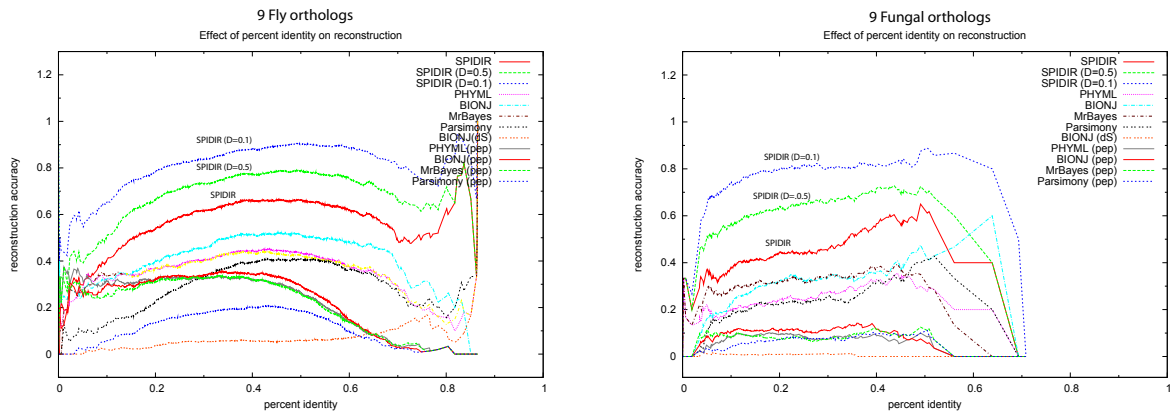
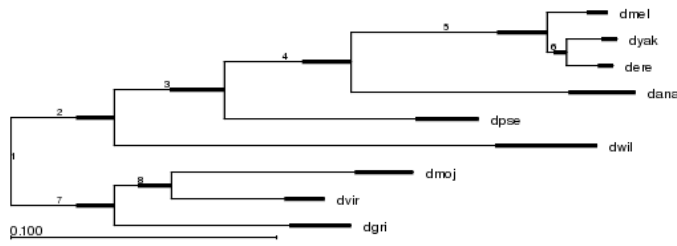


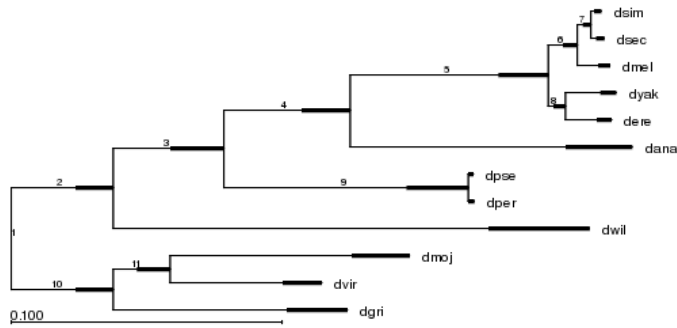
Figure S6: **Effect of mutation rate (nucleotide percent identity) on phylogenetic reconstruction accuracy.** Reconstruction accuracy drops for both fast and slow evolving genes. Peptide alignments perform worse overall and saturate near .6 nucleotide percent identity, where most mutations are likely to be only in the wobble codon position. Neighbor Joining on silent mutations (dS) increases slightly for slower evolving genes.

### 9 fly species (exclude dsec, dsim, dper)



branch	mean	st dev	st dev/mean
dmel	0.0226	0.0075	0.331
dyak	0.0189	0.0057	0.304
dere	0.0174	0.0055	0.319
dana	0.1068	0.0249	0.233
dpse	0.0955	0.0236	0.247
dwil	0.1815	0.0380	0.209
dvir	0.0575	0.0148	0.258
dmoj	0.0908	0.0217	0.239
dgri	0.0889	0.0231	0.259
2	0.0389	0.0142	0.366
3	0.0414	0.0203	0.491
4	0.0477	0.0183	0.384
5	0.0737	0.0187	0.253
6	0.0073	0.0048	0.660
7	0.0389	0.0142	0.366
8	0.0215	0.0124	0.580

### 12 fly species



branch	mean	st dev	st dev/mean
dsim	0.0037	0.0025	0.6907
dsec	0.0048	0.0027	0.5738
dmel	0.0119	0.0041	0.3462
dyak	0.0186	0.0056	0.3008
dere	0.0170	0.0053	0.3154
dana	0.1040	0.0244	0.2351
dpse	0.0018	0.0020	1.1020
dper	0.0021	0.0024	1.1536
dwil	0.1757	0.0371	0.2111
dmoj	0.0883	0.0211	0.2394
dvir	0.0559	0.0143	0.2563
dgri	0.0864	0.0223	0.2584
2	0.0376	0.0139	0.3688
3	0.0408	0.0196	0.4816
4	0.0466	0.0179	0.3839
5	0.0731	0.0182	0.2490
6	0.0107	0.0053	0.4938
7	0.0050	0.0028	0.5752
8	0.0063	0.0042	0.6638
9	0.0902	0.0226	0.2510
10	0.0376	0.0139	0.3688
11	0.0210	0.0121	0.5772

Figure S7: **Species-specific rates for the 9 and 12 fly tree.** Branches lengths are drawn with the mean species-specific rate. Thick line segments represent one standard deviation of the species-specific rate. Substitutions/site are relative, such that the branch lengths of each tree sums to one. The st dev/mean for each branch measures the tightness of its rate distribution.



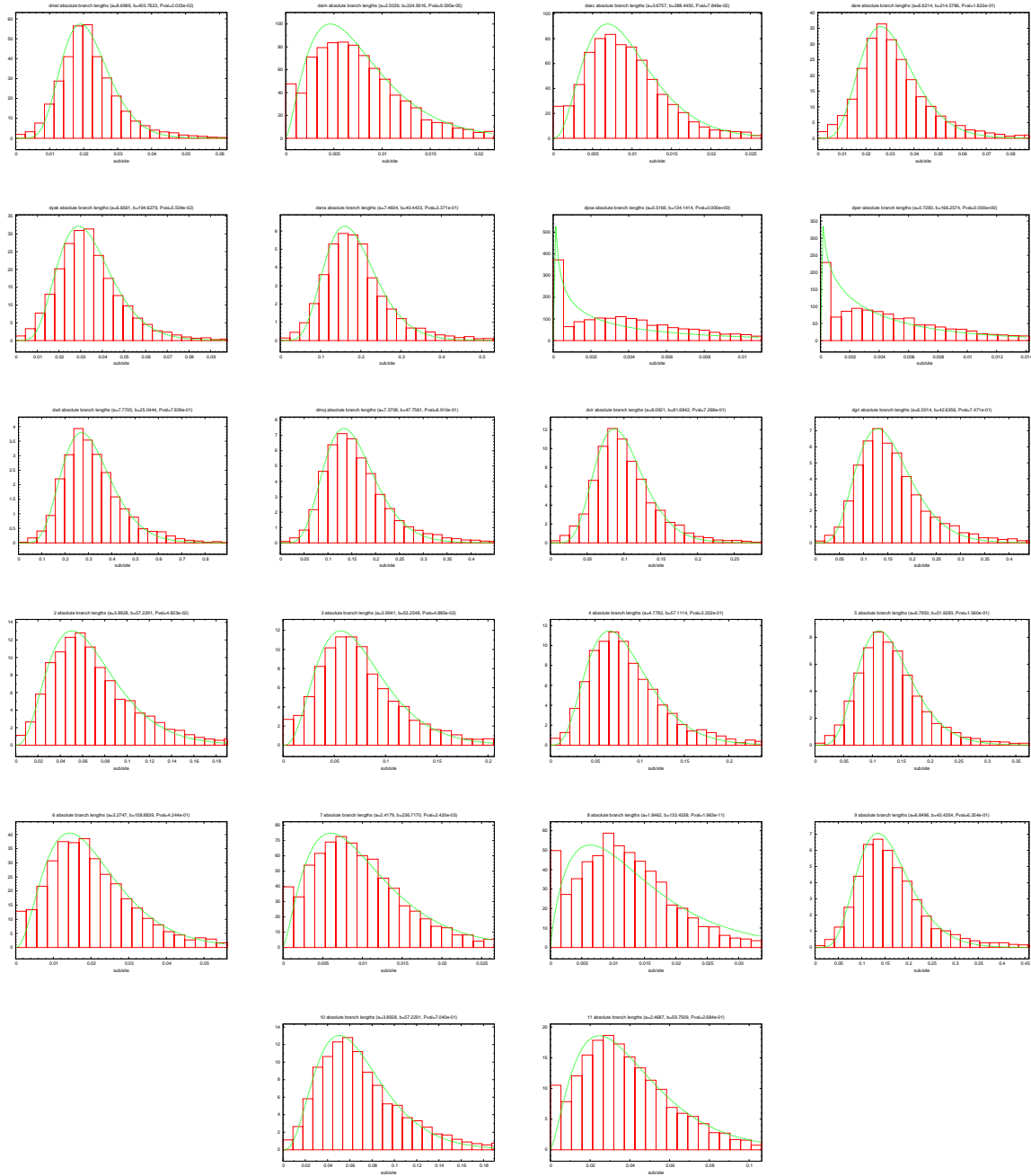


Figure S8: **Branch length distributions fitted by gamma for every branch in the fly tree.** 14 out of 22 absolute branch lengths significantly ( $p > 0.05$ ) fits the gamma distribution by Kolmogorov-Smirnov test (using middle 90% of lengths). Remaining branch lengths are closely approximated by gamma distribution.

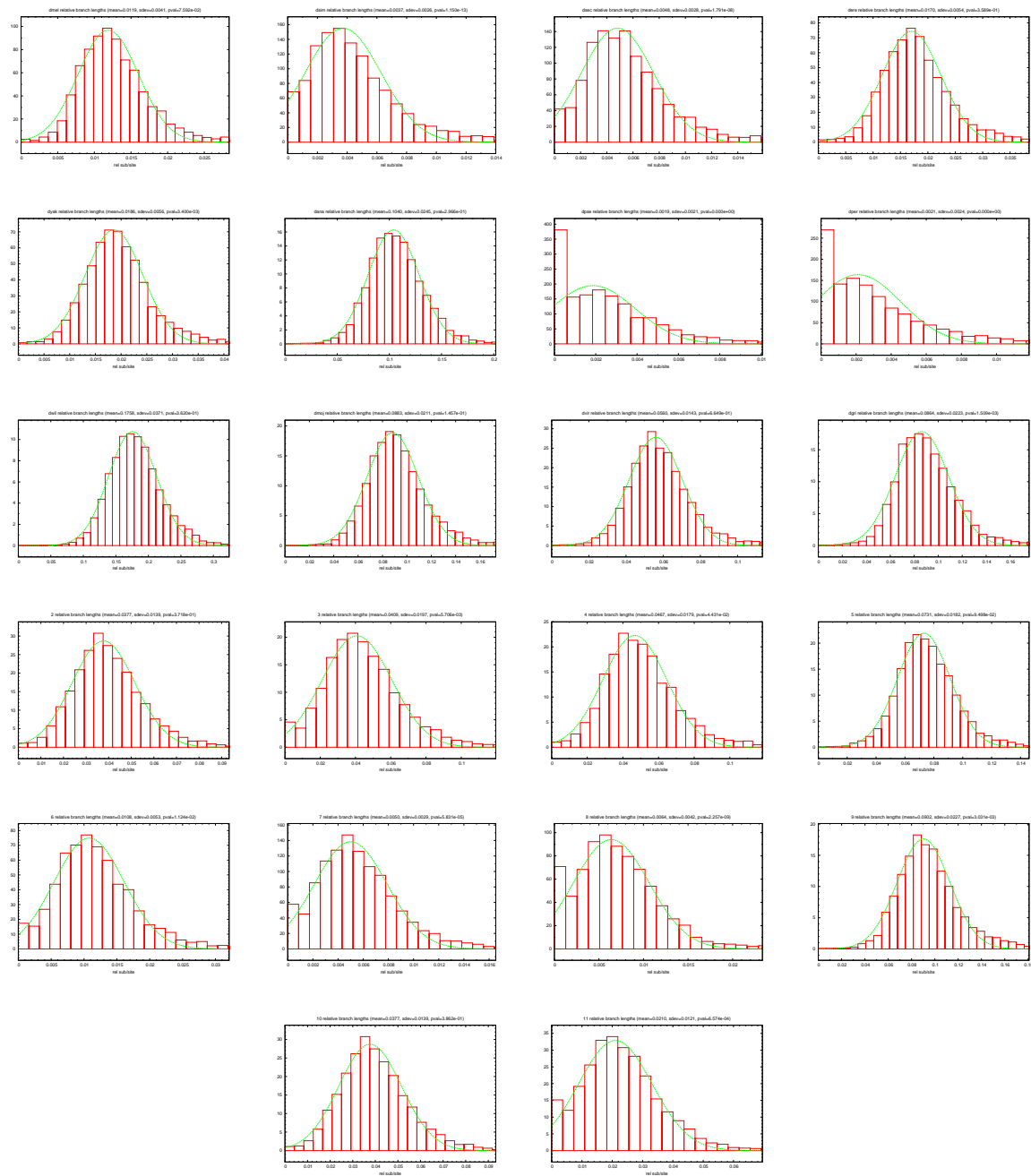
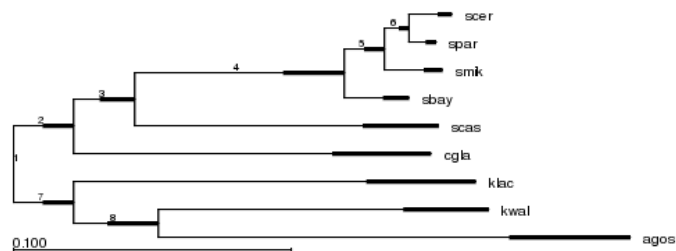


Figure S9: **Normalized length distributions fitted by normal for every branch in the fly tree.** 9 out of 22 relative branch lengths significantly ( $p > 0.05$ ) fits the normal distribution by Kolmogorov-Smirnov test (using middle 90% of lengths). Remaining branch lengths are closely approximated by normal distribution.



branch	mean	st dev	st dev / mean
scer	0.0153	0.0049	0.323
spar	0.0097	0.0036	0.370
smik	0.0207	0.0064	0.313
sbay	0.0231	0.0091	0.394
scas	0.1093	0.0269	0.246
cgla	0.1285	0.0354	0.275
agos	0.1699	0.0434	0.255
kwac	0.1189	0.0305	0.256
klac	0.1447	0.0391	0.270
2	0.0216	0.0110	0.508
3	0.0220	0.0124	0.567
4	0.0754	0.0219	0.290
5	0.0144	0.0073	0.508
6	0.0087	0.0035	0.403
7	0.0216	0.0110	0.508
8	0.0305	0.0183	0.602

Figure S10: **Species-specific rates for the 9 fungi tree.** Branches lengths are drawn with the mean species-specific rate. Thick line segments represent one standard deviation of the species-specific rate. Substitutions/site are relative, such that the branch lengths of each tree sums to one. The st dev/mean for each branch measures the tightness of its rate distribution.

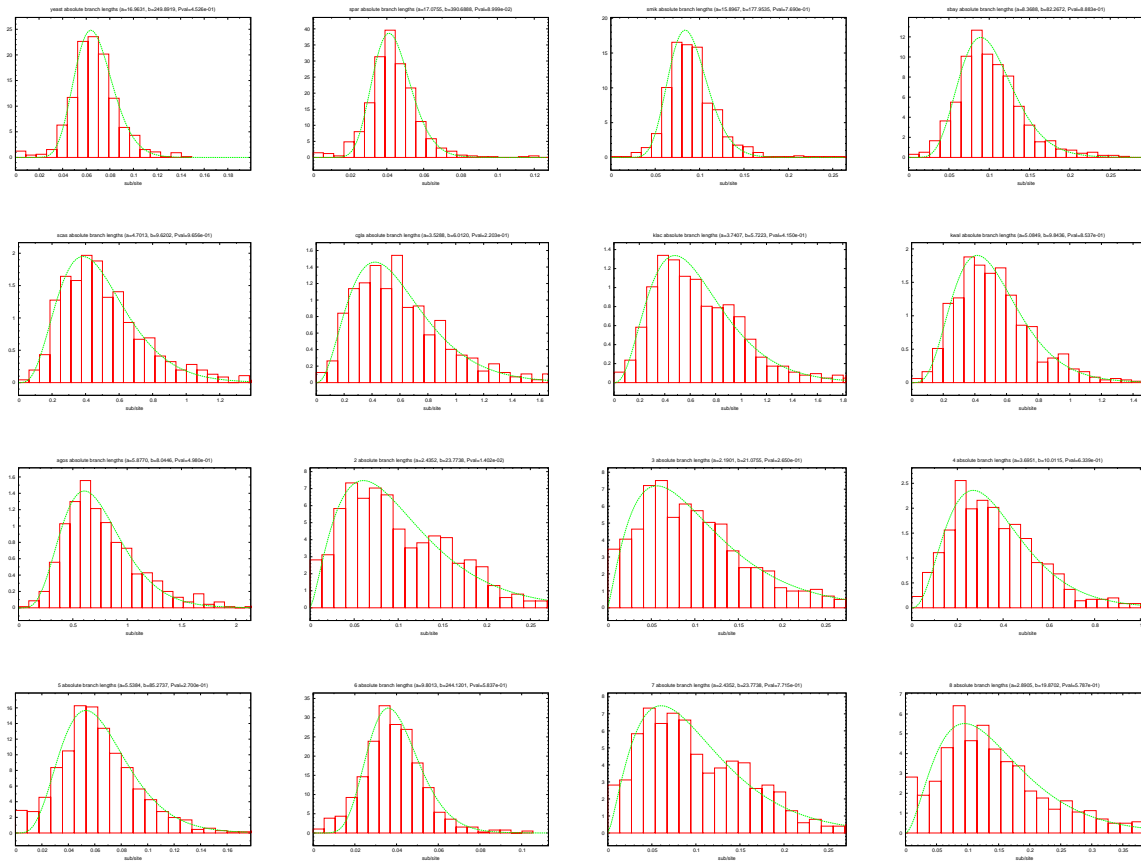


Figure S11: **Branch length distributions fitted by gamma for every branch in the fungal tree.** 16 out of 16 absolute branch lengths significantly ( $p > 0.05$ ) fits the gamma distribution by Kolmogorov-Smirnov test (using middle 90% of lengths).

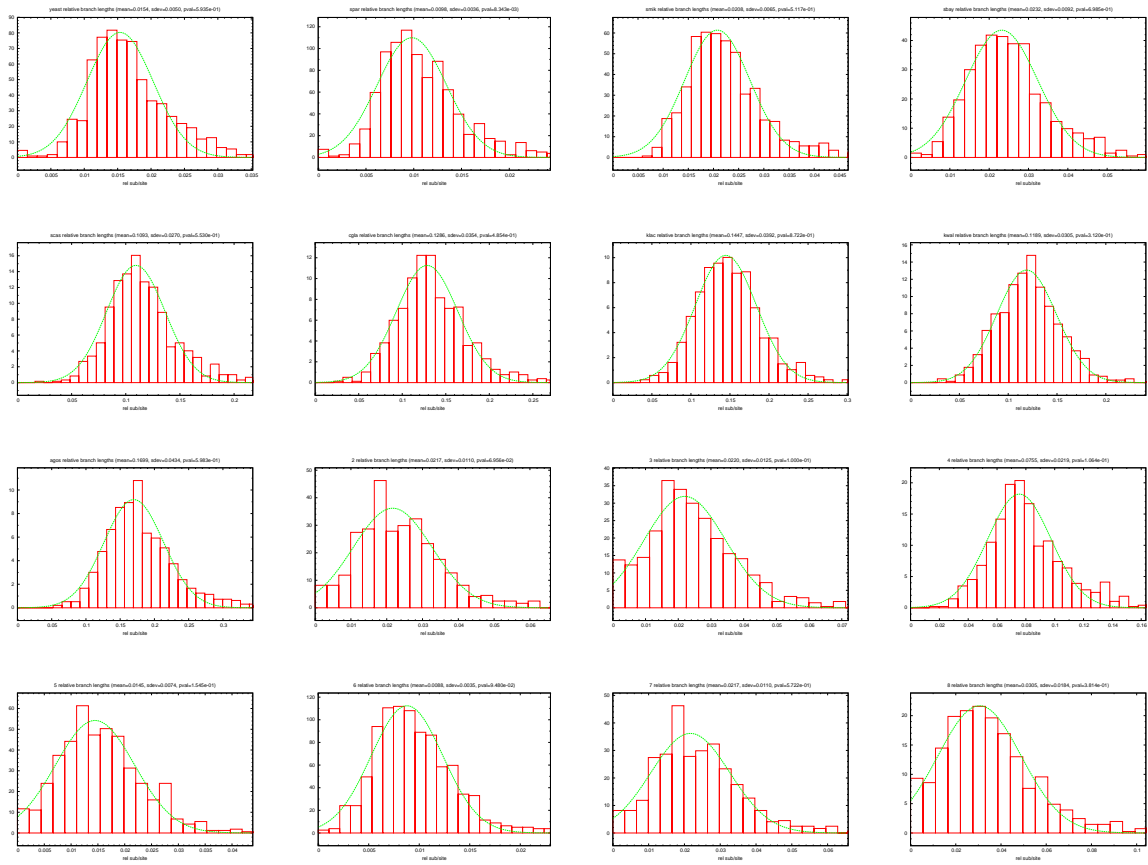


Figure S12: **Normalized length distributions fitted by normal for every branch in the fungal tree.** 15 out of 16 relative branch lengths significantly ( $p > 0.05$ ) fits the normal distribution by Kolmogorov-Smirnov test (using middle 90% of lengths).

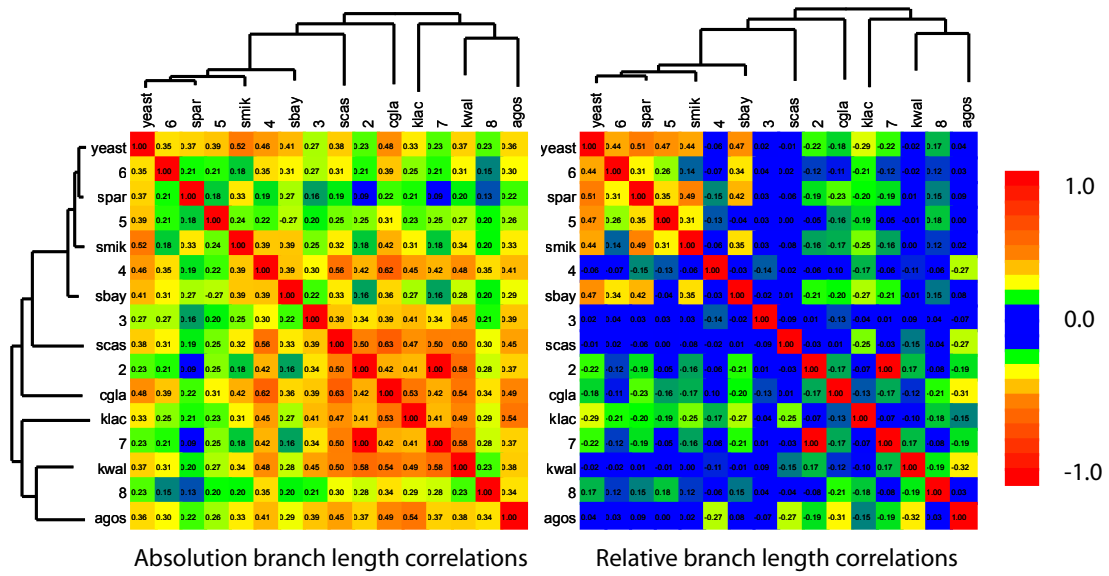


Figure S13: Absolute (left) and relative (right) branch length correlations within the fungal tree. Ancestral species are numbered as shown.

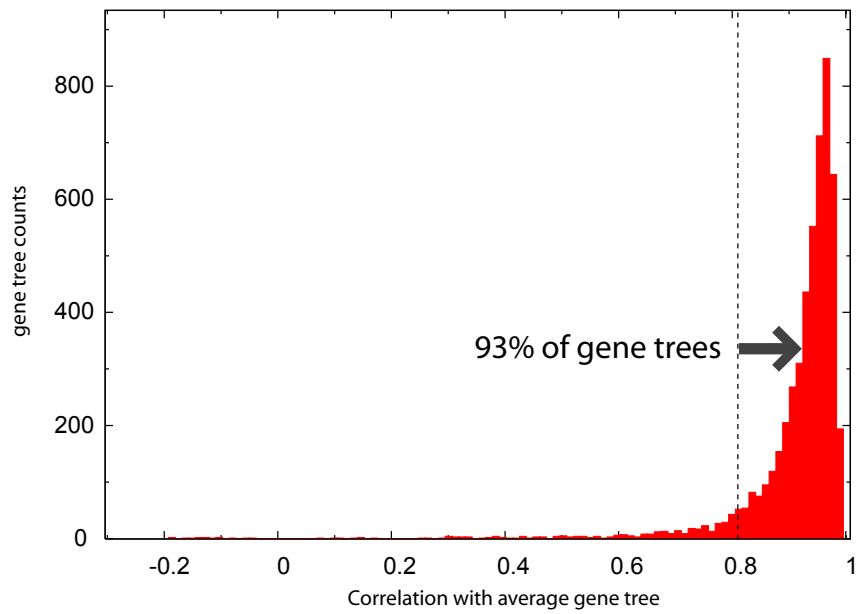


Figure S14: Histogram of gene tree branch length correlations between species tree branch lengths and 5154 fly ortholog gene trees. 93% of gene trees have a correlation greater than .8 with the species tree, indicating gene trees are highly correlated with each other.

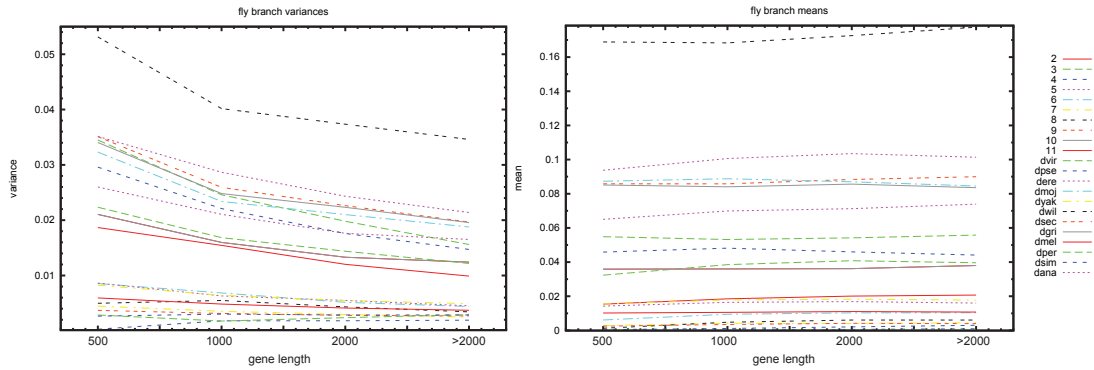


Figure S15: Variances of species-specific rates decrease with increasing sequence length, indicating that the variance of a species-specific distribution is partly due to distance estimation error (left). Species-specific means are not affected by sequence length (right). Mean and variance were calculated for relative branch lengths of fly gene trees binned by gene length into four bins ( $< 500$ ,  $500 - 1000$ ,  $1000 - 2000$ ,  $> 2000$ ).



## DATASET 1: Beta Hemoglobin Orthologs

Method	Topology chosen	Ratio	Result	Topology 1	Topology 2
SPIDIR likelihood	Topology 1	3.7	Correct	<b>613.190</b>	166.962
Max likelihood	Topology 2	119.9	Wrong	-1689.5	<b>-1687.4</b>
Neighbor Joining	Topology 2	8.0	Wrong	128	<b>828</b>
Parsimony	Topology 2	1.2	Wrong	307	<b>300</b>

Species branch	Expected		Topology 1				Topology 2				Likelihood comparison
	Length	Stdev	Branch	Abs length	Rel length	Likelihood	Branch	Abs length	Rel length	Likelihood	
mouse	0.079	0.065	<b>d</b>	0.050	0.083	6.133	<b>y</b>	0.050	0.074	6.132	1.00
rat	0.084	0.068	<b>c</b>	0.036	0.060	5.510	<b>x</b>	0.036	0.053	5.299	1.04
human	0.172	0.083	<b>e</b>	0.145	0.241	3.403					1.04
hmr+human	0.279	0.099					<b>w</b>	0.145	0.215	3.261	
dog	0.107	0.054					<b>v</b>	0.121	0.179	3.025	1.22
dog+hmr	0.215	0.107	<b>a+f</b>	0.120	0.199	3.684					
mr	0.314	0.108	<b>b</b>	0.196	0.325	3.676					2.01
hmr+mr	0.422	0.121					<b>z</b>	0.196	0.290	1.830	
<b>Family rate</b>	alpha=1.311	beta=4.949		rate=0.602		0.394		rate=0.675		0.285	1.38
<b>Total</b>						<b>613.190</b>				166.962	3.67

## DATASET 2: Alpha and Beta Hemoglobin Paralogs

Method	Topology chosen	Ratio	Result	Topology 1	Topology 2
SPIDIR likelihood	Topology 2	14.6	Correct	12.185	<b>179.646</b>
Max likelihood	Topology 2	1.08E+25	Correct	-1965.984	<b>-1940.952</b>
Neighbor Joining	Topology 2	8	Correct	0.000	<b>998.000</b>
Parsimony	Topology 2	1.2	Correct	495.000	<b>425.000</b>

Species branch	Expected		Topology 1				Topology 2				Likelihood comparison
	Length	Stdev	Branch	Abs length	Rel length	Likelihood	Branch	Abs length	Rel length	Likelihood	
mouse	0.079	0.065	<b>d</b>	0.054	0.056	5.771	<b>y</b>	0.054	0.114	5.312	0.92
rat	0.084	0.068	<b>c</b>	0.065	0.067	5.691	<b>x</b>	0.065	0.137	4.365	0.77
human	0.172	0.083	<b>e</b>	0.053	0.054	1.774					0.54
hmr+human	0.279	0.099					<b>w</b>	0.053	0.112	0.961	
dog	0.107	0.054					<b>v</b>	0.082	0.173	3.548	2.00
dog+hmr	0.215	0.107	<b>a+f</b>	0.082	0.084	1.776					
mr	0.314	0.108	<b>b</b>	0.441	0.453	1.611					2.06
hmr+mr	0.422	0.121					<b>z</b>	0.2	0.421	3.310	
<b>Family rate</b>	alpha=1.311	beta=4.949		rate=0.973		0.073		rate=0.675		0.686	9.39
<b>Total</b>						12.185				<b>179.646</b>	14.74

Figure S16: (Dataset 1) Evaluation of two topologies (Figure 4b, 4e) for four hemoglobin-beta orthologs by three phylogenetic methods and SPIDIR. Due to long branch attraction, each method finds the incorrect Topology 2 as more likely. In contrast, SPIDIR uses learned branch length distributions (*Expected*) to compute the likelihood of each branch and concludes that Topology 1 is 3-fold more likely. (Dataset 2) Evaluation of two topologies (Figure 4b, 4e) for two hemoglobin-beta orthologs (mouse and rat) and two hemoglobin-alpha orthologs (human and dog). Since these genes are related by an ancestral duplication that is well before the mammalian speciation, the branch lengths support the topology T2 with a 14-fold likelihood ratio.

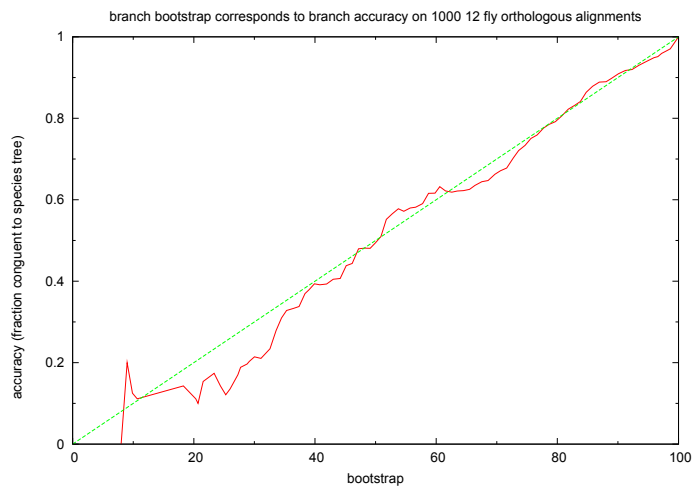
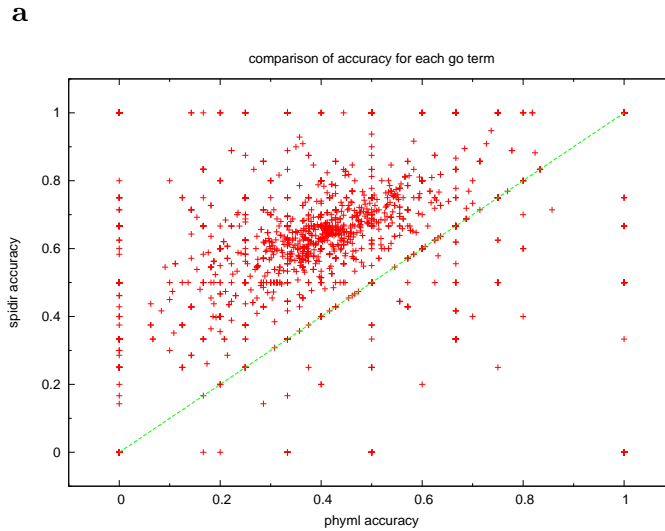


Figure S17: **Branch bootstrap values from reconstructing 1000 fly ortholog trees plotted against probability of branch being correct.** Probability of correctness for a branch with bootstrap  $X$  was estimated by percentage of correct branches with bootstraps within  $X - 5/100$  to  $X + 5/100$ .



**b**

GO Term	p-value	SPIDIR	PHYML	total
oocyte microtubule cytoskeleton polarization	0.1849	4 (40.0%)	7 (70.0%)	10
mRNA cleavage and polyadenylation specificity factor complex	0.2	1 (33.3%)	3 (100.0%)	3
establishment and/or maintenance of cytoskeleton polarity	0.2068	5 (41.6%)	8 (66.6%)	12
establishment and/or maintenance of microtubule cytoskeleton polarity	0.2068	5 (41.6%)	8 (66.6%)	12
oocyte microtubule cytoskeleton organization	0.2068	5 (41.6%)	8 (66.6%)	12
mannosyl-oligosaccharide mannosidase activity	0.2428	1 (25.0%)	3 (75.0%)	4
mannosidase activity	0.2619	2 (40.0%)	4 (80.0%)	5
antifungal humoral response (sensu Protostomia)	0.2619	1 (20.0%)	3 (60.0%)	5
endoribonuclease activity	0.3142	6 (60.0%)	8 (80.0%)	10
structural constituent of peritrophic membrane (sensu Insecta)	0.5	2 (25.0%)	3 (37.5%)	8
RAB small monomeric GTPase activity	0.5	7 (50.0%)	8 (57.1%)	14
SH3/SH2 adaptor protein activity	0.5	3 (37.5%)	4 (50.0%)	8
carboxylesterase activity	0.5	4 (50.0%)	5 (62.5%)	8
transmembrane receptor protein tyrosine kinase docking protein activity	0.5	3 (37.5%)	4 (50.0%)	8
transmembrane receptor protein tyrosine kinase signaling protein activity	0.5	3 (37.5%)	4 (50.0%)	8

Figure S18: **(a) Accuracy comparison of SPIDIR vs PHYML for each GO term.** Each tree was associated with each GO term of the *D. melanogaster* gene. **(b) 15 GO terms for which SPIDIR most significantly under performs PHYML.** P-values are computed using the hypergeometric test. P-values above have not been corrected for multiple-testing. Doing so would decrease significance even further. No GO term performs significantly worse ( $p > 0.1$ ) for SPIDIR than for PHYML.

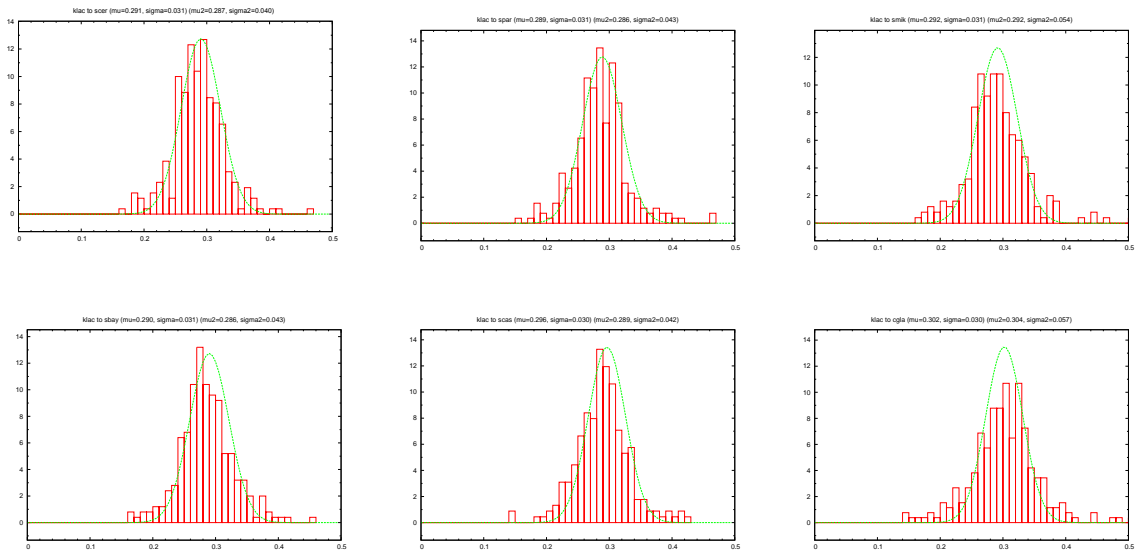


Figure S19: **Branch distributions of trees with duplication approximated by normal.** For each of the 138 gene families in our WGD dataset, we identified the distance between one pre-duplication species, *K. lactis*, and two ohnologs in a post-duplication species. These distances were normalized by the estimated family rate for each gene tree. The histogram of branch lengths is plotted against the normal expected by the model (sum of several independent normals).